

d R A W

Draw a protective spirit

On their creative Journey, River sculpted a mask in tribute to Arnemetia, Buxton's very own goddess. You can meet Arnemetia, the goddess of healing, protector of all waters and natural springs, on the front of this leaflet.

Use this space to draw your own protective spirit, for a place you've visited today or hope to explore in the future.

W R I T E

Write about your protective spirit

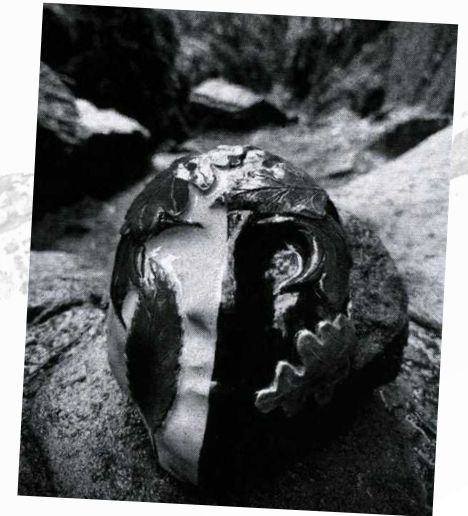
After drawing your spirit guardian, it is time to give them a name. You could pick a name that reflects their strongest quality, whether it's Valour for bravery or Willow for flexibility.

Now write a little about them. This could be a sentence, a few lines, a haiku, or even a very short story. Try to think about who they are, what they protect and where they can be found.

**NO JOBS
IN THE ARTS**

BUXTON LINE IS PROUD TO PRESENT:

C R E A T I V E J O U R N E Y S A C T I V I T Y L E A F L E T



Take this leaflet full of activities with you on the **MANCHESTER - BUXTON** Railway Line. Get a pencil and start your next creative trip with **RIVER GLADE**

WORD Tidy

Tidy up the Transhipment Warehouse

Step back to 1801! This historic Whaley Bridge Transhipment Warehouse was once the bustling heart of canal trade in the Peak District. With so much cotton and limestone coming and going, these words have ended up in a real muddle! Can you unjumble them?

R E W A S E H O U

L W Y A H E
d R i B E G

L N A C a

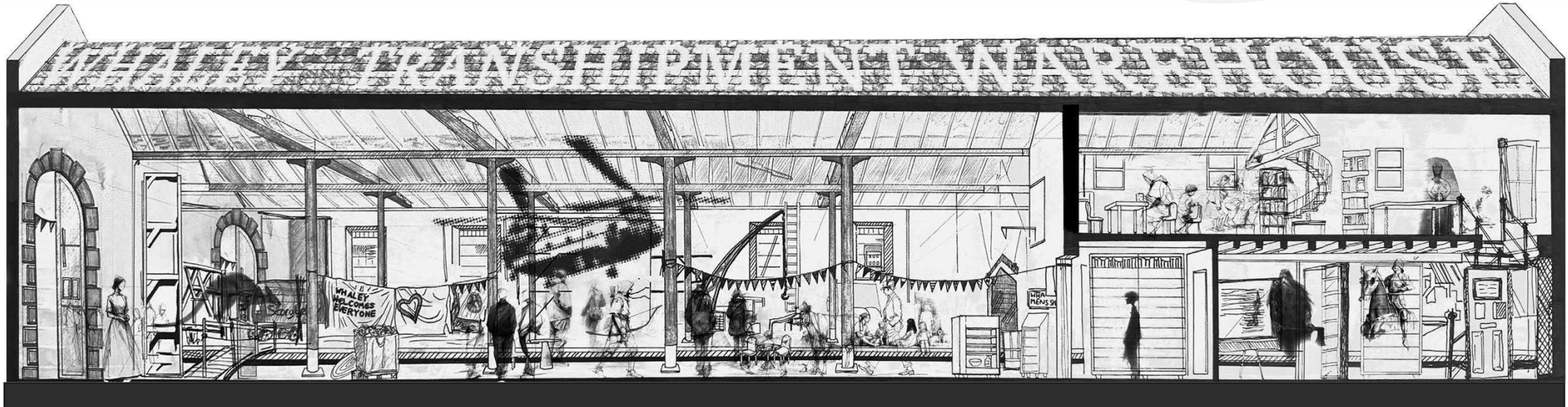
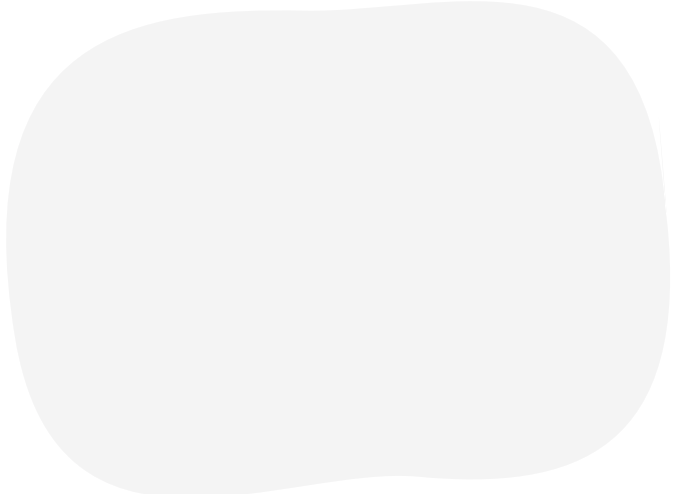
E L M i E N T S O

Look closely at the letters—each one was captured by River Glade from real signage found along the Manchester to Buxton Railway Line during their creative journey!

River Glade works across creative writing, publishing, drawing, and ceramics. Their practice explores nature, place and identity. @khlrophilia

Capture letters from your journey
Have you spotted any interesting signs or lettering on your journey along the Manchester-Buxton Railway Line? Look out for station signage, painted letters and bold fonts on shops and buildings.

Use this space to draw some of the letters you've found - copy the shapes, styles and textures that caught your eye.



(1) Canal (2) Limestone (3) Warehouse (4) Whaley Bridge